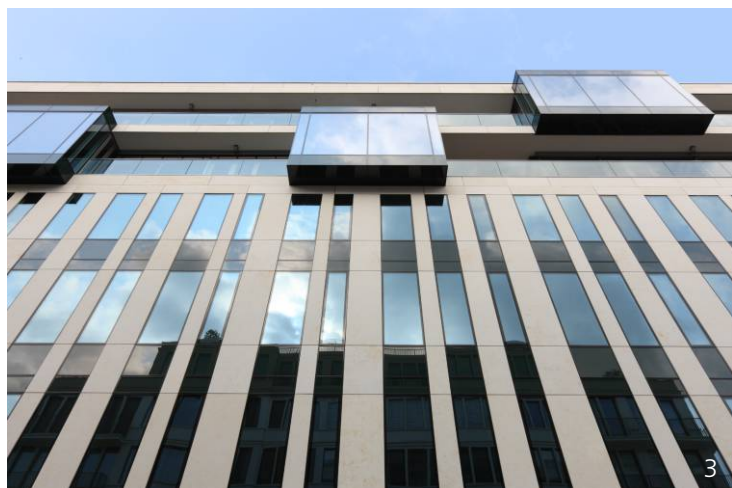
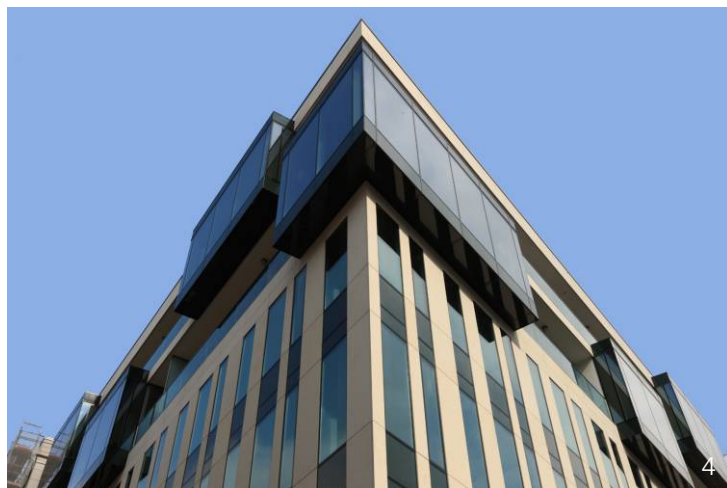


RESIDENTIAL AND OFFICE BUILDING OBERWALLSTRASSE 12/13, BERLIN, GERMANY

PROJECT SUMMARY. The residential and office building designed by Bothe Richter Teherani is located in direct vicinity of the Ministry of Foreign Affairs, between Gendarmenmarkt and Hausvogteiplatz. The 5-storey building is characterised by its extraordinary architectural design and its premium building standard.

FOCUS OF CONSULTING SERVICES. The exclusive building with its ambitious architectural design, centrally located in the inner city of Berlin, required a high level of protection against external noise. Another major factor in the planning of building physics was to keep the building cool in summer; this was achieved by the apartments' glass boxes without any exterior shading system.

In order to implement the sophisticated architectural specifications for the exterior design, special solutions regarding facade technology were developed during the design phase on the basis of comparative studies. The straight, band-shaped facade of the three lower floors is contrasted by the protruding glass boxes of the apartments on the 4th and 5th floor. These walk-in glass boxes intended to stand out with their plain, sober design were realized with a storey-high structural glazing system. Due to the sophisticated geometry, the heat insulation requirements could only be met by means of specifically developed facade solutions.



CLIENT

Grundstücksgesellschaft
Oberwallstraße 12/13 GbR mbH, Berlin

ARCHITECT

Bothe Richter Teherani Architekten, Hamburg

PROJECT DATA

Completed 2006

SERVICES RENDERED

Room acoustics, building acoustics, thermal building physics, facade technology, protection against external noise
Overall consulting for all work phases, consulting regarding facade technology up to conceptual design